



"Please note that these files may not be up to date. However, the questions will help you understand the exam format and typical question patterns."

www.atmicnetworks.com

Warning: Keep connected with our support team for latest updates

Question: 1

Which two statements are correct about greenfield and brownfield deployments? (Choose two.)

- A. A brownfield deployment has no network environment.
- B. A greenfield deployment has no network environment.
- C. A greenfield deployment has a network environment and must be upgraded.
- D. A brownfield deployment has a network environment and must be upgraded.

Answer: B,D

Question: 2

Which aspect of network design facilitates future growth and troubleshooting efforts?

- A. business continuity
- B. high availability
- C. modularity
- D. security

Answer: C

Question: 3

You are the network architect with a large banking institution with operations around the world. Any outage results in lost revenue for your company, and may result in lost customers. Network uptime is your top priority.

In this scenario, what should be your focus?

- A. return on investment
- B. business continuity
- C. capacity planning
- D. service visualization

Answer: B

Question: 4

Which three categories should the collected data be sorted into during the data analysis phase? (Choose

three.)

- A. customer requirements
- B. customer data
- C. Industry standards
- D. personal data
- E. project boundaries

Answer: A,C,E

Question: 5

What are two characteristics of a greenfield deployment? (Choose two.)

- A. A greenfield deployment means that there are fewer restrictions.
- B. A greenfield deployment is more common.
- C. A greenfield deployment always implies integration with other vendor products.
- D. A greenfield deployment means a new deployment.

Answer: A,D

Question: 6

What are two prerequisites of capacity planning in a network design? (Choose two.)

- A. predicting traffic projections for future growth
- B. understanding historical application behavior
- C. understanding current application behavior
- D. understanding historical growth

Answer: A,C

Question: 7

Which two features does Secure Web Gateway provide? (Choose two.)

- A. name resolution services
- B. proxy services
- C. application queuing services
- D. firewall services

Answer: B,D

Question: 8

Which two products comprise Juniper's SASE solution? (Choose two.)

- A. Juniper
- B. Juniper Secure Edge
- C. Paragon Active Assurance
- D. Mist AI-Driven SD-WAN

Answer: B,D

Question: 9

Which Juniper ATP Cloud feature detects threats in HTTPS without decryption?

- A. Encrypted Traffic Insights
- B. DNSSEC
- C. Paragon Active Assurance
- D. SSL

Answer: A

Question: 10

What are two fundamental functions of Cloud Access Security Broker (CASB)? (Choose two.)

- A. compliance
- B. redundancy
- C. performance
- D. visibility

Answer: A,D

Question: 11

You need to deploy a content filtering solution to block access to some Web sites.

In this scenario, which solution would you implement?

- A. IDP
- B. UTM
- C. firewall rules
- D. Juniper ATP On-Premises

Answer: B

Question: 12

Which two statements are correct about the Juniper Connected Security strategy? (Choose two.)

- A. It extends attack mitigation to routers and switches.
- B. It extends attack mitigation to network chokepoints.
- C. It extends security to all user connections.
- D. It extends security to every point of connection on the network.

Answer: A,D

Question: 13

You want to provide employees with controlled access to the corporate network with company devices, ensure secure access for printers and cameras, and enable employees to use their devices on the corporate network.

Which two methods satisfy the requirements? (Choose two.)

- A. implementing MAC authentication for printers and cameras
- B. implementing MAC authentication for laptops
- C. implementing 802.1x authentication for printers and cameras
- D. implementing 802.1x authentication for laptops

Answer: A,D

Question: 14

You want to capture an accurate baseline of your network. In this situation, which two actions should you perform? (Choose two.)

- A. Maintain an understanding of the applications that should run on your network.
- B. Test the restoration of the rescue configurations.

- C. Standardize the module population across the network.
- D. Collect an extensive history of network performance data.

Answer: A,D

Question: 15

Your company requires the ability to quickly recover from a misconfigured router breaking its forwarding and control planes. They decide to deploy terminal servers with connections to all router console ports to provide this capability.

Which two strategies will satisfy the requirements? (Choose two.)

- A. Connect the terminal servers using a switch connected to inet6.0 on the production network routers.
- B. Connect the terminal servers using a 4G LTE modem.
- C. Connect the terminal servers using a parallel network of separate routers.
- D. Connect the terminal servers using a switch connected to a separate routing instance on the production network routers.

Answer: B,C

Question: 16

You are asked to design a backup schedule using existing tools and incurring no additional expense. Which two protocols would you consider to accomplish this task? (Choose two.)

- A. rsync
- B. SMTP
- C. SFTP
- D. SNMP

Answer: A,C

Question: 17

What two statements correctly describe the REST API on Junos devices? (Choose two.)

- A. The REST API is enabled by default on Junos devices.
- B. The REST API supports GET requests.
- C. The REST API supports DELETE requests.
- D. The REST API supports both HTTP and HTTPS.

Answer: B,C

Question: 18

What are two issues that affect the uptime of a network? (Choose two.)

- A. planned outages
- B. power current used
- C. WAN failure
- D. packet loss

Answer: A,C

Question: 19

Which two statements about network management are correct? (Choose two.)

- A. Fault management can discover problems before they cause downtime.
- B. Authorization validates that a user is who they claim to be.
- C. Measurement of network performance, errors, and security allows administrators to make informed decisions.
- D. Network management is added after the network is built and network designers do not need to consider it.

Answer: A,C

Question: 20

In which two instances should you use Postman as part of network automation? (Choose two.)

- A. to connect network infrastructure with cloud applications
- B. to write custom scripts in the Python programming language
- C. to receive real-time updates from a device without polling
- D. to perform prototyping of API requests

Answer: A,D

Question: 21

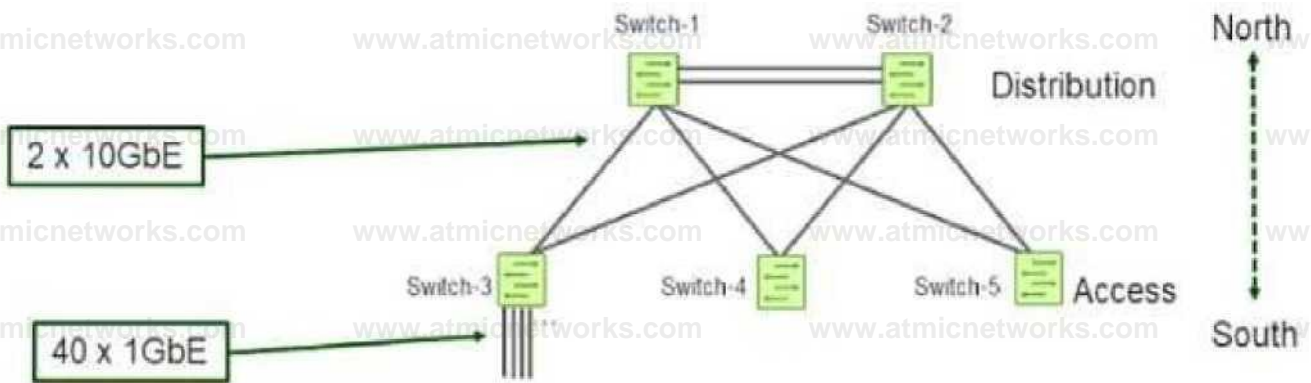
What are the correct categories of the OAMP management methodology?

- A. operations, administration, maintenance, provisioning
- B. operations, applications, maintenance, performance
- C. operations, actions, management, personnel
- D. operations, accounting, management, positioning

Answer: A

Question: 22

Click the Exhibit button.



Referring to the exhibit, which oversubscription ratio applies to Switch-3?

- A. 2:4
- B. 4:1
- C. 2:1
- D. 1:2

Answer: B

Question: 23

You need to determine how far apart access points operating on the same channel ought to be placed. In this scenario, what is the recommended signal strength when determining this information?

- A. -30 dBm
- B. -10 dBm
- C. -5 dBm
- D. -65 dBm

Answer: D

Question: 24

What are two primary objectives when designing a wireless LAN (WLAN)? (Choose two.)

- A. the number of access points required
- B. the location of the access points
- C. access point serviceability
- D. access point configurability

Answer: A

Question: 25

You are gathering information to determine capacity, density, and scaling of systems for a campus switching design.

What information is critical to the design? (Choose three.)

- A. the number of guest users or contractors accessing with a mobile hot spot
- B. the number of unmanned IP-enabled end systems (e.g., HVAC, network printers, POS machines)
- C. the number of users with a fixed desktop station and attached IP phone
- D. the number of physical VoIP phones not connected to a desktop
- E. the number of users that are home office/mobile workers

Answer: B,C,D

Question: 26

You are a network engineer at a large university. The architecture team has recently chosen Mist to replace the existing controller-based system and has replaced all the access points (APs) throughout the campus. Since the migration, users have been complaining about VoIP calls being dropped while moving between buildings. You have already validated that the APs provide appropriate coverage. Which change would help alleviate this issue?

- A. Deploy a Mist Edge.
- B. Deploy a Session Smart Conductor.
- C. Deploy a Session Smart Router.
- D. Deploy additional access points.

Answer: A

Question: 27

- A. A lower oversubscription ratio increases the overall cost of the network.
- B. A lower oversubscription ratio provides less available bandwidth to handle congestion.
- C. A lower oversubscription ratio decreases the overall cost of the network.
- D. A lower oversubscription ratio provides more available bandwidth to handle congestion.

Answer: A,D

Question: 28

You are designing the network for a small campus using Mist. You have two Junos switches that support EVPN-VXLAN core devices and two Junos access switches that do not support EVPN-VXLAN. Which campus design is available with these devices?

- A. EVPN Multihoming
- B. Campus Fabric core-distribution
- C. Campus Fabric 3-stage IP Clos
- D. Campus Fabric 5-stage IP Clos

Answer: B

Question: 29

According to the WLA Standards Framework, which phase of wireless network design involves meeting with the customer to collect business and technical requirements?

- A. the Deploy phase
- B. the Design phase
- C. the Define phase
- D. the Diagnose phase

Answer: C

Question: 30

Your manager asks you to determine a reliable, cost-effective solution to connect a building access switch to a

building distribution switch at a distance of 400 feet (120 meters) in the same building. What would you use in this scenario?

- A. UTP
- B. multimode fiber
- C. PoE
- D. Wi-Fi bridge

Answer: B

Question: 31

What are two necessary parameters for achieving a fast roaming, uninterrupted transition, and access point redundancy? (Choose two.)

- A. deploying all access points on the same channel
- B. maintaining a noisy environment
- C. low signal-to-noise ratio
- D. radio frequency coverage overlap

Answer: A,D

Question: 32

You are asked to design an enterprise network.

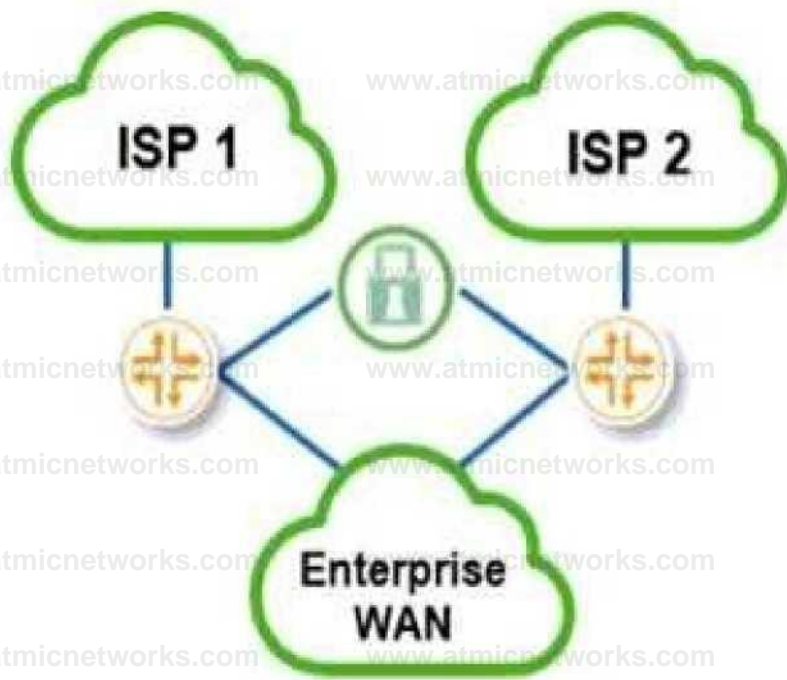
In this scenario, which two product families are appropriate to deploy in the distribution layer according to Juniper Networks? (Choose two.)

- A. QFX
- B. SRX
- C. ACX
- D. EX

Answer: A,D

Question: 33

Click the Exhibit button.



Which WAN function is shown in the exhibit?

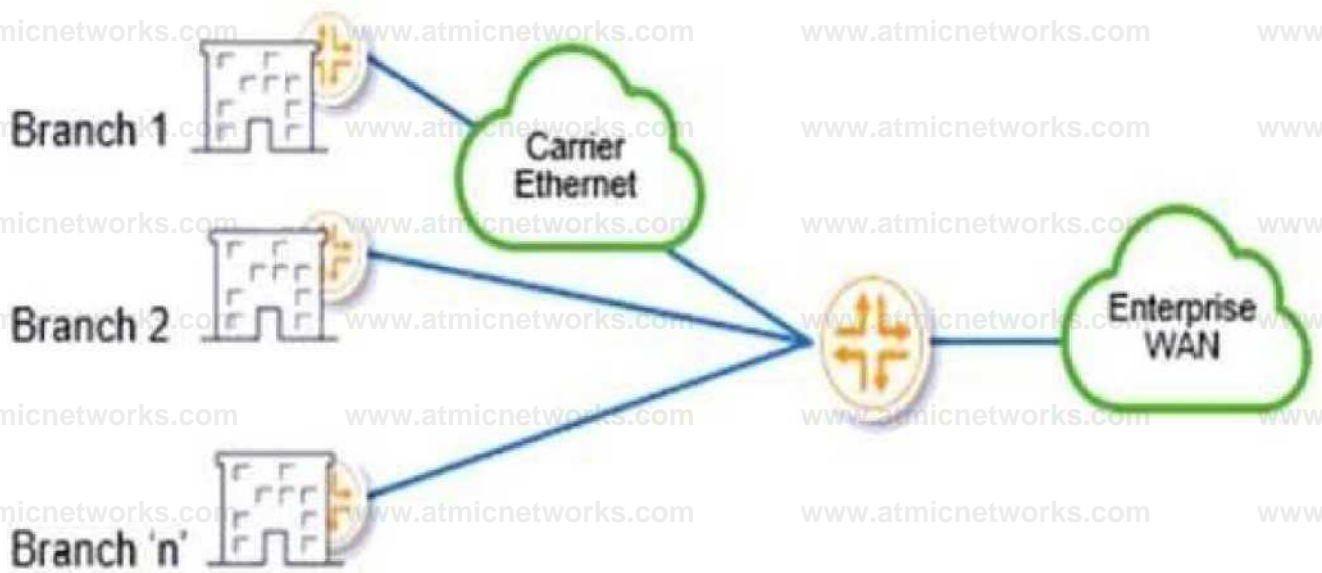
- A. WAN aggregation
- B. Data Center Interconnect
- C. Internet edge
- D. private WAN

Question: 34

Click the Exhibit button.

Which two WAN functions are shown in the exhibit? (Choose two.)

A. Data Center Interconnect



B. WAN aggregation

C. Internet edge

D. private WAN

Answer: C

Question: 35

Which VPN protocol has the highest overhead?

A. GRE over MPLS

B. IPsec with NAT Traversal

C. Secure Vector Routing

D. IPsec without NAT Traversal

Answer: B,D

Answer: B

Question: 36

Multiple customer sites are connected through your service provider network using a Layer 3 VPN.

You must design the Layer 3 VPN so that the traffic sent between sites is encrypted.

Which technology would you use to accomplish this task?

- A. Use IPsec with AH.
- B. Use GRE with a key sequence number.
- C. Use IPsec with ESP.
- D. Use OSPF with IPsec authentication.

Answer: C

Question: 37

You are considering replacing a traditional MPLS WAN with a SD-WAN solution.

Which two statements are true in this scenario? (Choose two.)

- A. SD-WAN requires the use of specialized ASICs to route application traffic.
- B. SD-WAN can provide similar security and privacy to legacy WANs.
- C. Direct Internet Access can be made available in remote offices using a local breakout.
- D. Direct Internet Access can be made available in remote offices using a central breakout.

Answer: B,C

Question: 38

You must design a low latency WAN link for a new emergency backup site. The traffic contains propriety company information and must be protected. To save computing resources, you cannot encrypt the traffic across the link.

In this scenario, which type of WAN would you propose for the new link?

- A. public
- B. private
- C. satellite
- D. wireless

Answer: B

Question: 39

SD-WAN routes security-sensitive data across MPLS, VPNs, and

- A. Internet circuits
- B. dark fiber

- C. wireless
- D. microwave

Answer: A

Question: 40

What is an overlay solution that expands the Layer 2 network space across the WAN?

- A. EVPN-VXLAN
- B. IPsec
- C. GRE
- D. MC-LAG

Answer: A

Question: 41

What two statements are true about SD-WAN? (Choose two.)

- A. Distributed policy enforcement does not scale.
- B. SD-WAN branches can aggregate different WAN circuits.
- C. SD-WAN routers must have specialized hardware to do application routing.
- D. SD-WAN supports local breakout for Direct Internet Access

Answer: B,D

Question: 42

You are asked to create a proof of concept software-defined WAN (SD-WAN). You must identify its positive features for a project proposal.

Which two statements are correct in this scenario? (Choose two.)

- A. SD-WAN uses manual provisioning.
- B. SD-WAN improves network security by encrypting WAN traffic.
- C. SD-WAN abstracts the control plane of all routing devices to multiple controllers.
- D. SD-WAN supports zero-touch provisioning.

Answer: B,D

Question: 43

Where are path selections made for an SD-WAN router?

- A. physical interface card
- B. local packet forwarding engine
- C. local routing engine
- D. centralized controller

Answer: C

Question: 44

You are asked to design a branch WAN. The branch sites have limited bandwidth and it is imperative to limit overhead.

Which technology will satisfy the requirements?

- A. Secure Vector Routing
- B. Generic Routing Encapsulation
- C. IPsec
- D. EVPN-VXLAN

Answer: A

Question: 45

What are two components that make up Juniper Networks' Session Smart Routing? (Choose two.)

- A. Juniper Mist cloud
- B. static routing
- C. SRX
- D. Juniper Session Smart Conductor

Answer: A,D

Question: 46

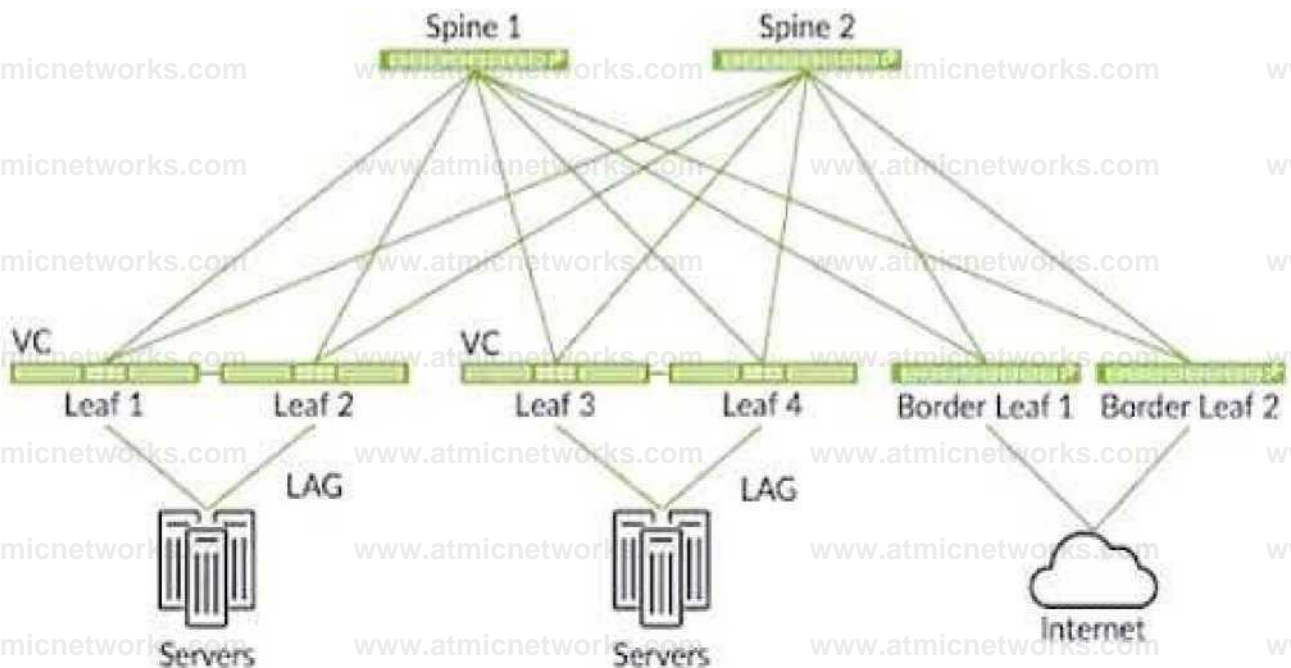
Which two WAN Assurance models does Juniper Networks use for Juniper Session Smart Routing and Mist AI? (Choose two.)

- A. cloud only
- B. hybrid cloud
- C. on-premises only
- D. ATP cloud

Answer: A,B

Question: 47

Click the Exhibit button.



After a series of outages in an existing network, you are asked to analyze and provide recommendations for resiliency for the data center network shown in the exhibit.

Which improvement should you recommend to eliminate management plane single points of failure in this scenario?

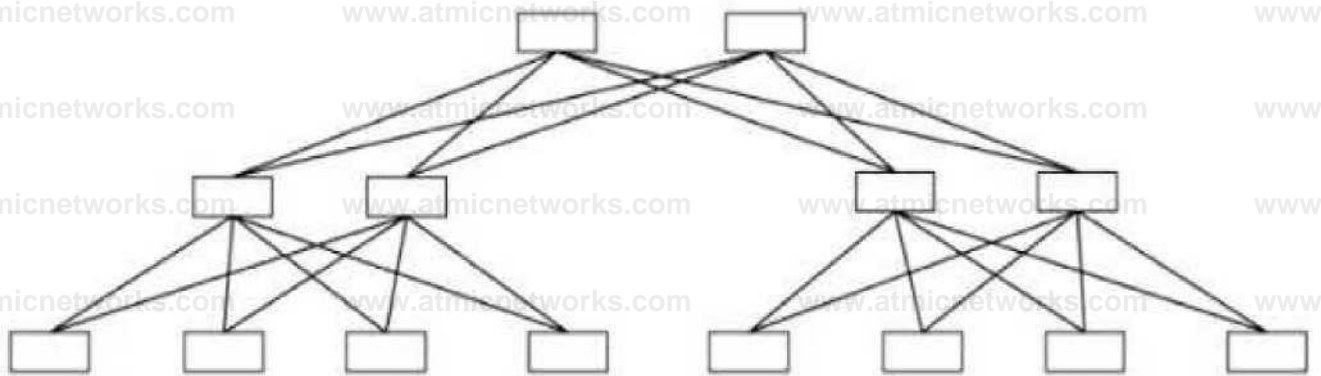
- A. Configure ESI-LAG on the spines facing the leafs.
- B. Replace the Virtual Chassis with ESI-LAG from the leafs facing the servers.
- C. Configure a Virtual Chassis between the spines.
- D. Replace the Virtual Chassis with VRRP configured on the servers.

Answer:
B

Question:

48

Click the Exhibit button.



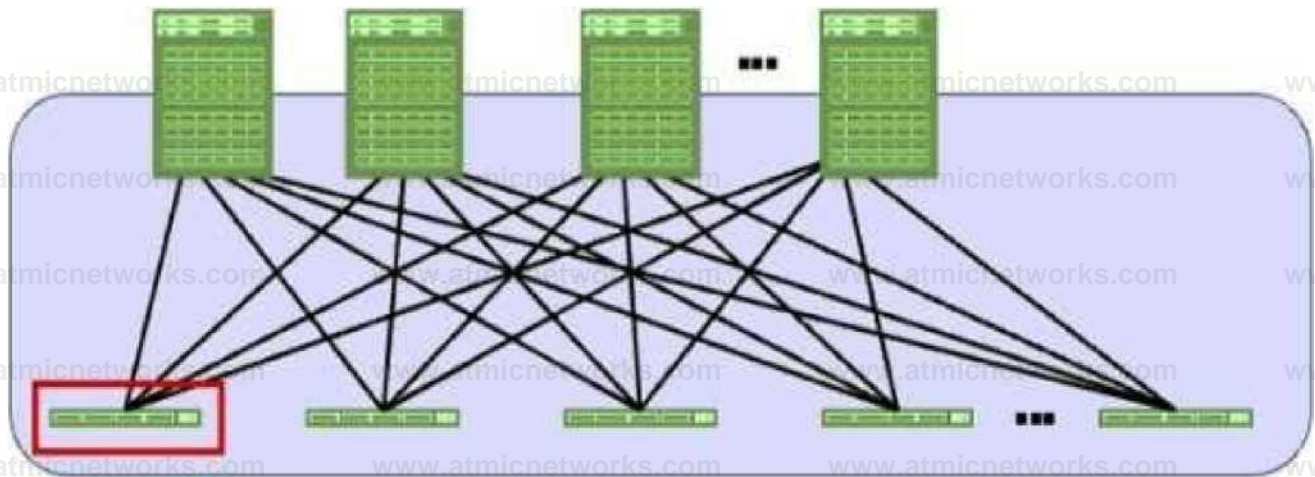
Referring to the exhibit, what are two accurate descriptions of this topology? (Choose two.)

- A. 3-stage IP Clos
- B. 5-stage IP Clos
- C. 5-tier architecture
- D. 3-tier architecture

Answer:
A

Question: 49

Click the Exhibit button.



Referring to the exhibit, what is the highlighted device in a data center called?

- A. a spine node
- B. a leaf node
- C. a core node
- D. an aggregation node

Answer: B

Question: 50

Which two versions of the Juniper SRX are appropriate for deployment in a virtual environment? (Choose two.)

- A. SRX1500
- B. cSRX
- C. SRX300
- D. vSRX

Answer: B,D

Question: 51

As a network architect, in which three areas would you add MX Series routers? (Choose three.)

- A. mobile device
- B. data center network
- C. service provider

D. edge networkE WiMAX

Answer: B,C,D

Question: 52

You are asked to review a migration plan from standalone SRX to SRX chassis clusters that connect to the core network.

Which two types of interfaces will be required to support this design on the SRX Series devices? (Choose two.)

- A. management
- B. fab
- C. loopback
- D. control

Answer: B,D

Question: 53

What is a design consideration for using IBGP for the underlay in a Clos data center fabric?

- A. A full mesh of IBGP neighbors will be required.
- B. BGP ADD-PATH must be enabled for multipath to work on leafs.
- C. An IGP will always be required for learning loopback addresses.
- D. A 5-stage Clos topology will not work with IBGP underlay.

Answer: B

Question: 54

You are designing the security domain of a large data center requiring 10 GbE interfaces. Which two Juniper products would you recommend in this situation? (Choose two.)

- A. SRX5800
- B. SRX345
- C. vSRX
- D. SRX300

Answer: A,C

Question: 55

What does the Virtual Extensible LAN (VXLAN) overlay solution provide?

- A. BGP overlay
- B. Layer 2 overlay
- C. Layer 3 underlay
- D. IGP overlay

Answer: B

Question: 56

In an EVPN-VXLAN data center, what would be a reason to consider using discrete border leaves rather than placing border roles onto the spines?

- A. to provide for differentiated oversubscription ratios for traffic into and out of the data center
- B. to eliminate multicast traffic in and out of the fabric
- C. to allow for provisioning ACLs between the data center and the WAN
- D. to provide specific devices designed for handling traffic burstiness on the WAN

Answer: A

Question: 57

Which two switches should you recommend as leaf nodes for a small data center where cost is a factor? (Choose two.)

- A. EX4300
- B. QFX5700
- C. EX4400
- D. QFX5130

Answer: A,C

Question: 58

As a network architect, where would you add PTX Series routers?

- A. core network
- B. access network
- C. cellular edge
- D. branch location

Answer: A

Question: 59

Which two technologies would be used to encapsulate frames to provide Layer 2 reachability across an IP fabric data center? (Choose two.)

- A. MACsec
- B. IPsec
- C. MPLS
- D. VXLAN

Answer: C,D

Question: 60

Which two statements are correct about using BGP as the underlay routing protocol in an IP fabric? (Choose two.)

- A. Static routes are required for EBGp neighbors to establish.
- B. EBGp underlay requires the multipath multiple-as parameter with the corresponding loadbalancing policy.
- C. Route Reflection can be used in an IBGP underlay to increase control plane scalability.
- D. Using an IGP is required for an EBGp underlay.

Answer: B,C

Question: 61

Which statement is true about 3-stage IP fabrics?

- A. There must be physical connections between all of the spine nodes.
- B. Each leaf node must have at least one physical connection to each spine node.
- C. There must be physical connections between all of the leaf nodes.
- D. Each leaf node must have at least two physical connections to each spine node.

Answer: B

Question: 62

When determining the oversubscription ratio for an IP fabric, which two statements are true? (Choose two.)

- A. Removing spine nodes from the IP fabric increases the oversubscription ratio.
- B. Removing leaf nodes from the IP fabric increases the oversubscription ratio.
- C. Adding spine nodes to the IP fabric decreases the oversubscription ratio.
- D. Adding leaf nodes to the IP fabric decreases the oversubscription ratio.

Answer: A,C

Question: 63

Which two statements correctly describe an ESI-LAG? (Choose two.)

- A. Both VTEPs advertise connectivity to the same Ethernet segment.
- B. Both VTEPs advertise connectivity to different Ethernet segments.
- C. The LACP system ID on the two connected leaves is configured with the same value.
- D. The LACP system ID on the two connected leaves is configured with different values.

Answer: A,C

Question: 64

You are considering changing an IBGP-based IP fabric design to one that is EBGP-based.

In this scenario, which two statements are correct about an EBGP-based design? (Choose two.)

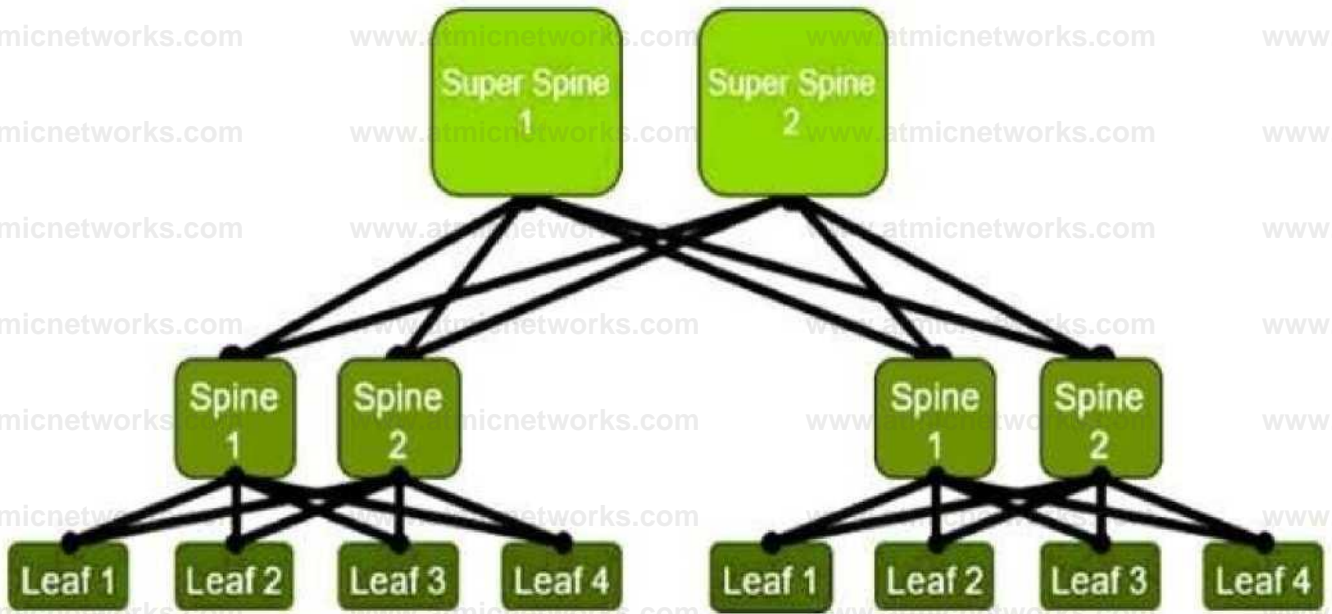
- A. Route reflection is not required.
- B. An IGP is not required.
- C. AS numbers are not required.
- D. Confederations may be used.

Answer: A,B

Question:

65

Click the Exhibit button.



Which type of IP fabric is shown in the exhibit?

- A. collapsed fabric
- B. 5-stage IP fabric
- C. 7-stage IP fabric
- D. 3-stage IP fabric

Answer:

C